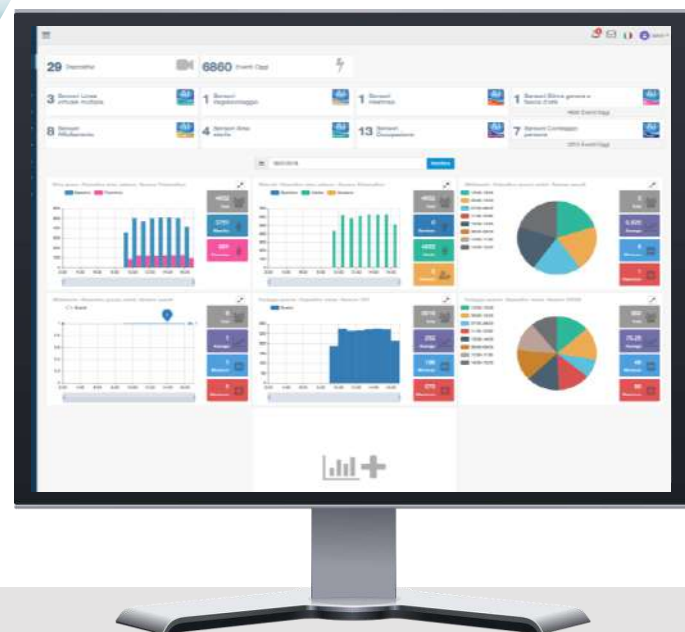


# AI-RETAIL

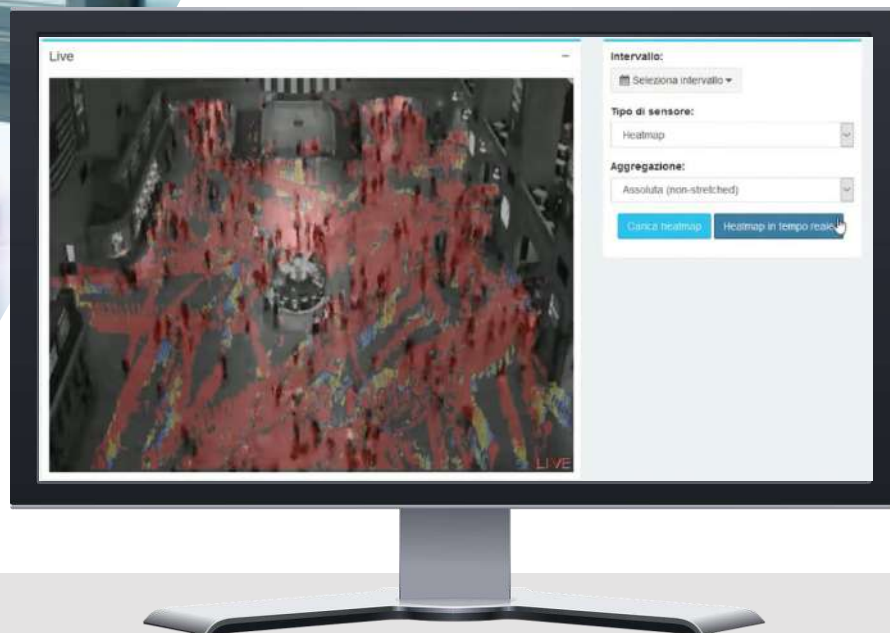
The integrated video analytic solution for  
business intelligence and store optimization



AI-RETAIL is the video analytic solution for understanding and improving your business activity: "if you don't know it, you can not improve it!"



A.I. Tech video analytic technology was selected as the **winner** of the Business Intelligence category in the Benchmark Innovation Award 2018. The awards are designed to recognize and reward innovative thinking and the delivery of benefits through advanced security solutions



AI-RETAIL is available in the form of a bundle including all the six features or in the form of a single plugin [AI-PEOPLE, AI-CROWD, AI-OVERCROWD, AI-OCCUPANCY, AI-OVEROCCUPANCY, AI-HEAT].

Combination of two or three features are also available.



**People counting through gates**



**Crowd Estimation**



**Queue Management**



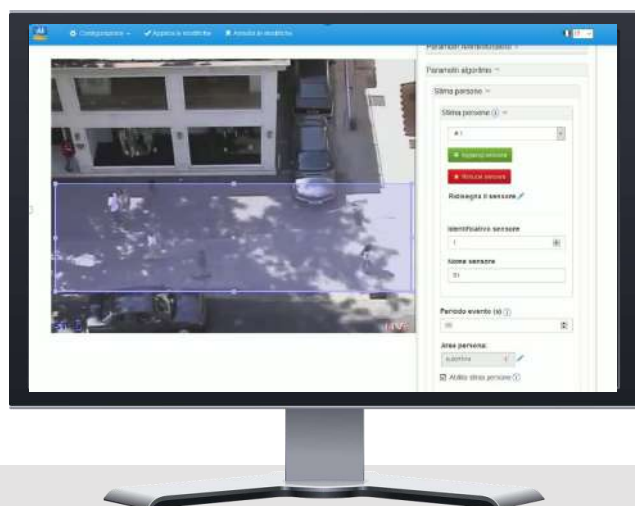
**Heatmap**



**Occupancy evaluation**



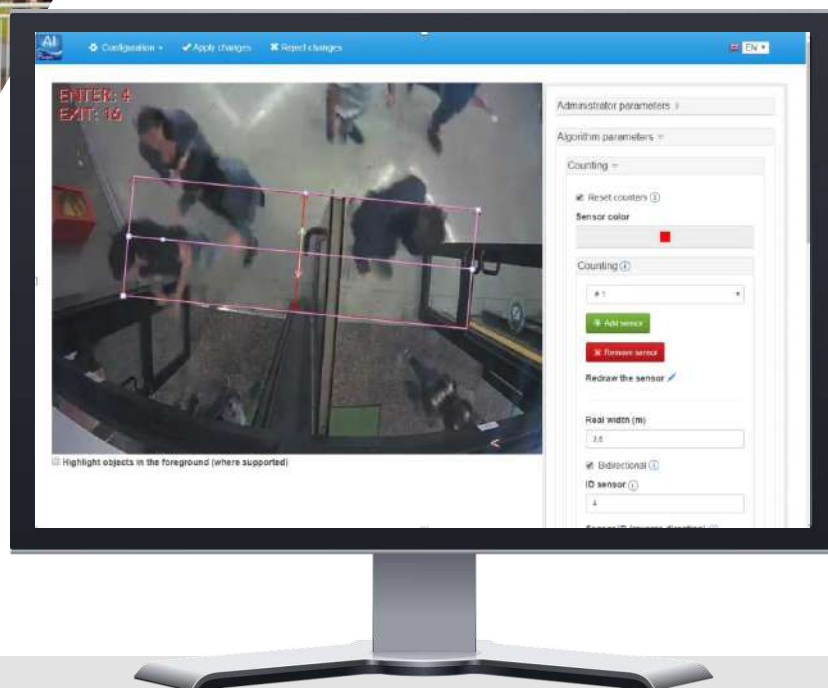
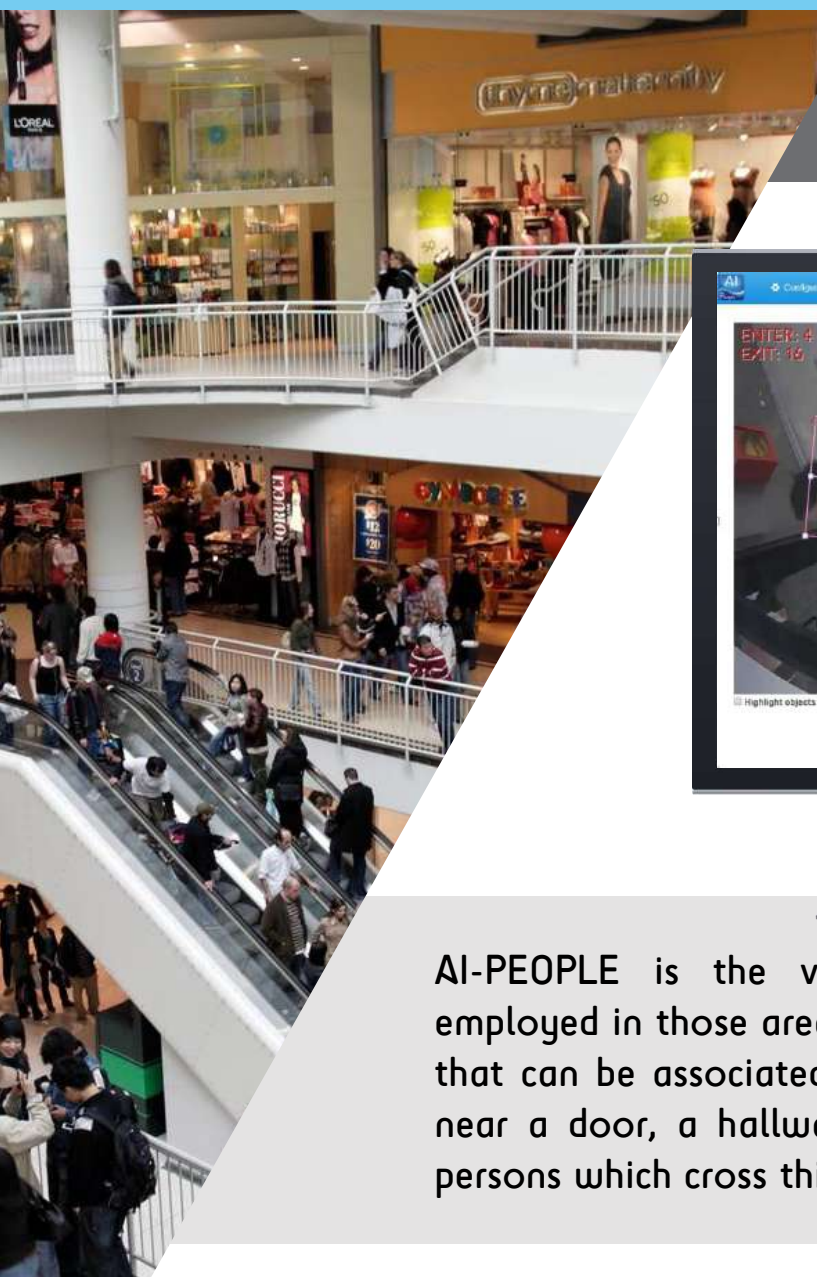
**Overoccupancy Evaluation**



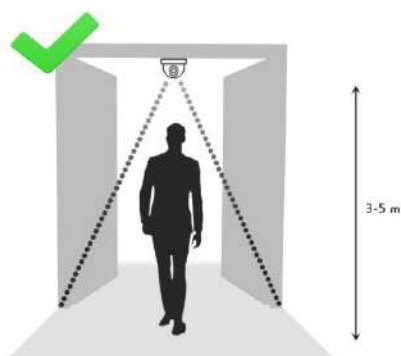




## People counting through gates



AI-PEOPLE is the video analytic module which can be employed in those areas where it exists a transit area or a gate that can be associated to a crossing virtual line [for instance, near a door, a hallway or a turnstile]. AI-People counts the persons which cross this line in a given direction.



In order to achieve the maximum possible accuracy, it is required to mount a camera with a zenital view with respect to the area of interest, with an height of at least 3 meters.

AI-People does not limit the number of virtual lines configurable by the user and can be installed both in indoor and outdoor environments.

Thanks to advanced algorithms of artificial vision and artificial intelligence, AI-People can correctly work, with an accuracy higher than 95%, also in situations where multiple passages occur or in presence of shopping carts and strollers.





## Crowd estimation

AI-Crowd is the video analytic module which can be employed in crowded areas where persons can stop or slowly move, even determining queueing situations. AI-Crowd allows to estimate the number of persons inside one or more areas of interest.



## AI-OVERCROWD



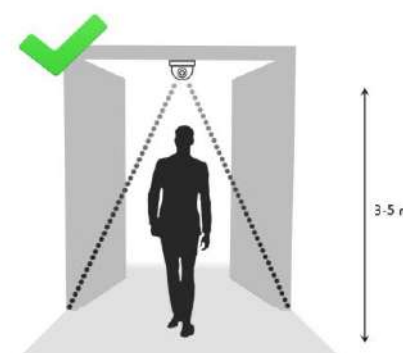
## Queue management

AI-Overcrowd is the video analytic module which allows to detect overcrowding situations, raising an alarm when the number of persons inside an area is too high.



AI-Crowd+ is the bundle composed by AI-Crowd and AI-Overcrowd

In order to achieve the maximum possible accuracy, it is required to mount a camera with a zenital view with respect to the area of interest, with an height of at least 3 meters. There are no limits on the number of areas of interest which can be configured by the user. AI-Crowd and AI-Overcrowd can work both in indoor and outdoor environments.



## Heatmap

AI-Heat is the video analytic module which classifies the areas taken by a camera depending on the time spent by a person inside, thus allowing to distinguish between the most visited areas [hot spots] and the less crowded ones [dead areas].



## AI-OCCUPANCY

## Occupancy evaluation

AI-Occupancy is the video analytic plugin which allows to evaluate the occupancy percentage of one or more areas of interest. AI-Occupancy allows to provide a quantitative evaluation, that can be combined with the qualitative one provided by AI-Heat.



## AI-OVEROCCUPANCY



## Overoccupancy evaluation

AI-Overoccupancy is the video analytic module which allows to detect overcrowding situations, raising an alarm when the percentage of occupancy inside an area is too high.



AI-Heat+ is the bundle composed by AI-Heat and AI-Occupancy



AI-Occupancy+ is the bundle composed by AI-Occupancy and AI-Overoccupancy



## ACCURATE & RELIABLE



The intelligent video analysis by A.I. Tech is based on a powerful engine which uses advanced algorithms of Intelligence and Artificial Vision, which allow to drastically reduce the number of false alarm, by making the solutions by A.I. Tech robust with respect to the illumination changes and to the presence of shadows and reflections. They allow to well operate both in indoor and outdoor environments.

## OPEN



The video analytic plugins are provided with a public API that allows its full openness towards third part systems for the notification of the events

## SIMPLE TO CONFIGURE



The video analytic plugins are provided with a simple and intuitive configuration system, which allows the setup of the algorithm parameters, the definition of the areas and the lines of interest, the choice of the channels for event notifications and the license management.

## EFFICIENT



The engineering of the algorithms allows to elaborate in parallel a high number of video streams per single core with a full frame rate, so drastically reducing the cost of the hardware.

## INTEGRATION



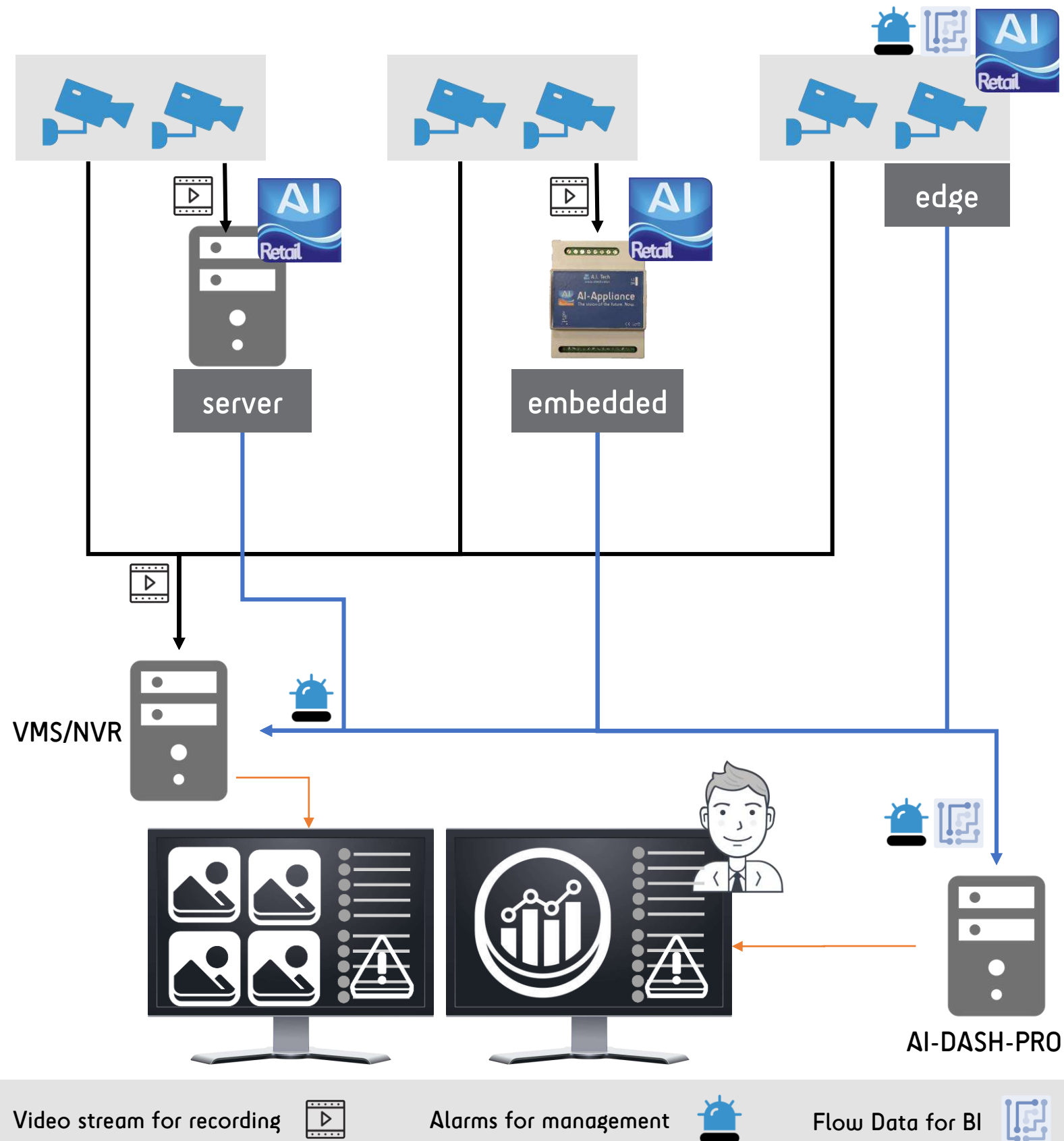
The video analytic plugins are able to notify the events through different channels, even simultaneously:

- Third part VMSs [Arteco, Milestone Xprotect, Wisenet Wave, Wisenet SSM, Avigilon]
- NVR Hanwha Techwin
- Text string over TCP-UDP protocols [POS-like]
- E-Mail/FTP
- Digital Output of the camera [with edge side version]
- AI-Dash-embedded / AI-Dash-PRO
- Other third part systems [HTTP+json]
- Customizable CGI

## MULTIPLATFORM

The video analytic plugins are available:

- Server side [Linux based]
- Embedded, as an integrated hw+sw solution [AI-Appliance]
- Edge side [ask the compatible cameras to our support]





## DASH add-on

✓ All the plugins edge-side are also available with a DASH add-on. The plugin indeed, also includes a dashboard integrated directly on board of the camera. Data related to the events, are stored directly on board of the camera (if equipped with the SD card), without the need of any external server. Such data can be visualized in a tabular and graphical form and a set of images associated to the events can be also stored.



You could be also interested in:



**AI-APPLIANCE**



**AI-DASH-PRO**



**AI-BIO**



**AI-ROAD**



# A.I. Tech

The Vision of the future. Now.



[www.aitech.vision](http://www.aitech.vision)



[info@aitech.vision](mailto:info@aitech.vision)



[linkedin.com/company/a-i-tech-srl](https://www.linkedin.com/company/a-i-tech-srl)



[@aitech srl](https://www.facebook.com/aitech srl)



[youtube.com/aitech solutions](https://www.youtube.com/aitech solutions)

## AWARDS



**CIOApplications** europa TOP 25  
ARTIFICIAL INTELLIGENCE  
SOLUTION PROVIDERS - 2017

**10** THE MOST *Innovative*  
ARTIFICIAL  
INTELLIGENCE  
SOLUTION PROVIDERS  
2018