

# AI-SECURITY

The integrated video analytic  
solution for security

The image shows a computer monitor displaying a software interface for a perimeter surveillance system. The interface is in Italian and features a live video feed of a fenced area. A red overlay on the video feed indicates a detected intrusion. The interface includes various settings and status indicators on the right side.

**Top Bar:** Loggato come: [nome utente] | Aperti 0 di 10 sensori | 3 sensori su 100 | [icone di rete]

**Main Video Feed:** Visualizza una veduta in tempo reale della perimetria. Un rettangolo rosso indica l'area di rilevamento. In basso a destra, c'è un timer "LIVE" che mostra "00:00".

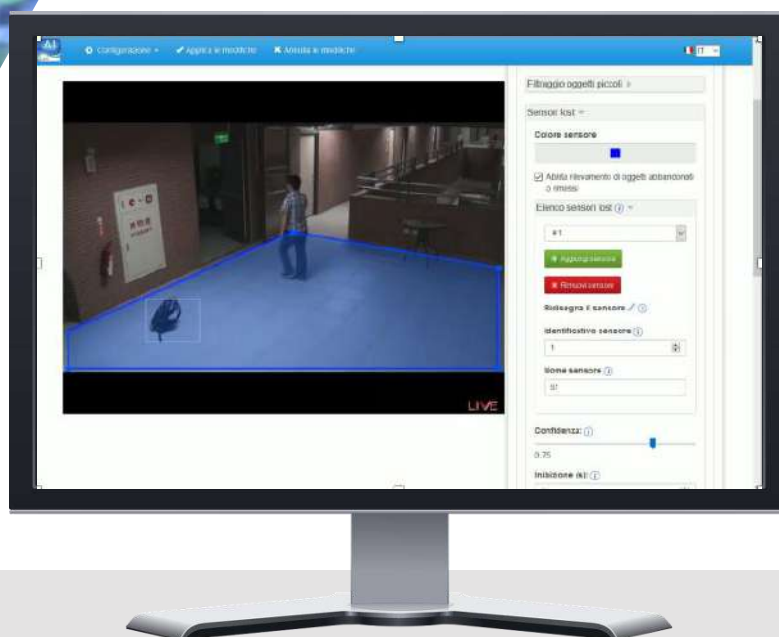
**Right Panel Settings:**

- Filtro oggetti piccoli:** [icona di filtro]
- Sensore di movimento:** [icona di movimento]
- Codice sensore:** [input campo]
- Sensore di movimento:** [input campo]
- Identificativo sensore:** [input campo]
- Nome sensore:** [input campo]
- Configurazione:** [input campo]
- Intensità:** [input campo]
- Intensità:** [input campo]
- Intensità:** [input campo]

*"After 12 minutes of continuous video monitoring, a guard will often miss up to 45% of screen activity.  
After 22 minutes of video, up to 95% is overlooked".*



A.I. Tech video analytic technology was selected as the **winner** of the Business Intelligence category in the Benchmark Innovation Award 2018. The awards are designed to recognize and reward innovative thinking and the delivery of benefits through advanced security solutions



AI-SECURITY is available in the form of a bundle including all the five features or in the form of a single plugin [AI-INTRUSION-(PRO), AI-LOST, AI-LOITERING, AI-FIRE, AI-SMOKE]. Combination of two or three features are also available.



Crossing lines detection



Entering in forbidden areas detection



Multiple crossing lines detection



Loitering detection



Abandoned/removed objects detection



Smoke detection

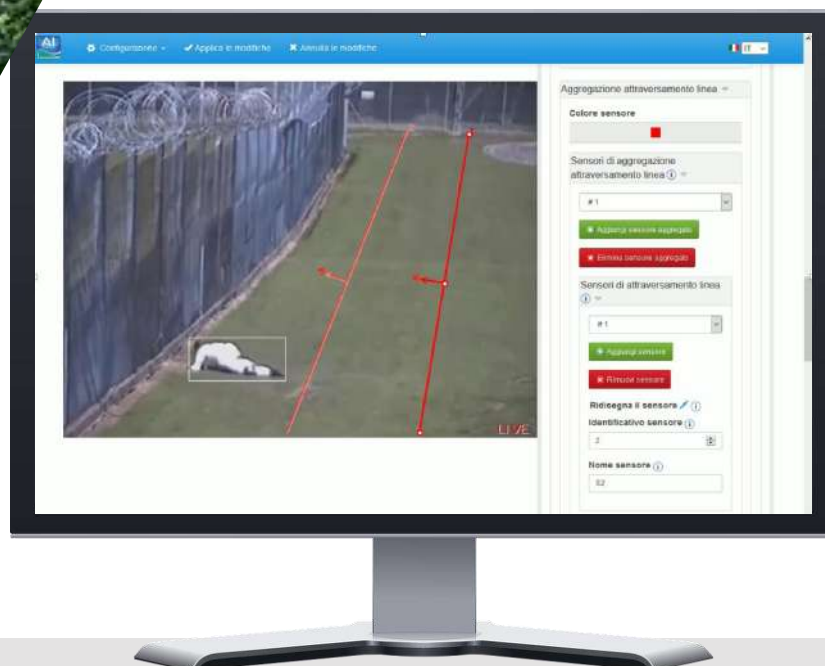


Flame detection

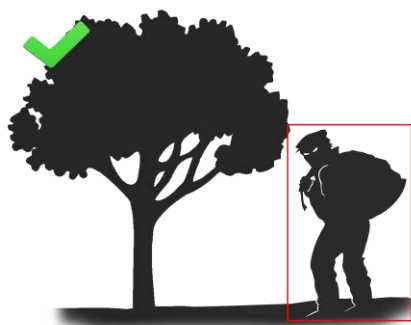




 Crossing lines detection  
 Entering in forbidden areas detection






AI-Intrusion is the video analytic module which allows to reveal intrusions in sterile zones and crossing of virtual lines [for instance for the perimetral security of the building].



AI-Intrusion allows the human operator to define an unlimited number of areas and virtual lines inside the scene. AI-Intrusion can be installed both indoor and outdoor and can work combined with both thermal and traditional cameras, the former ones being preferred. Thanks to an advanced algorithm of intelligent computer and artificial vision, AI-Intrusion can correctly work, with an accuracy higher than 95%, if combined with thermal cameras.



 Crossing lines detection  
 Entering in forbidden areas detection  
 Multiple crossing lines detection



## Abandoned/removed objects detection



AI-Lost is the video analytic module which allows to detect abandoned and/or removed objects [for instance objects abandoned in public areas such as airports, train stations or metro stations; garbage abandoned on the street; paintings or artworks' thefts in a museum].



AI-Lost can be installed both indoor and outdoor and can work combined with both thermal and traditional cameras.

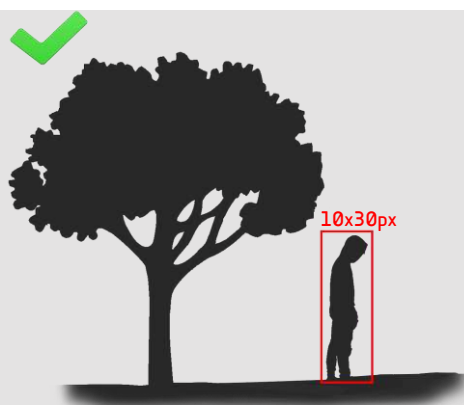
The permanence time of the objects inside the scene can be set by the user in a range 1-10 minutes, depending on the particular application field.



## Loitering detection



AI-Loitering is the video analytic module which allows to detect suspicious behaviours of persons staying in a given area for a long time, that can be configured by the human operator.



AI-Loitering can be installed both indoor and outdoor and can work combined with both thermal and traditional cameras.

AI-Loitering correctly works, with an accuracy higher than 90%, in cases in which the subject is not occluded for at least 95% of the time and the occlusions last less than 2 seconds.



AI-SECURITY3 is the bundle composed by AI-Intrusion-PRO, AI-Lost and AI-Loitering



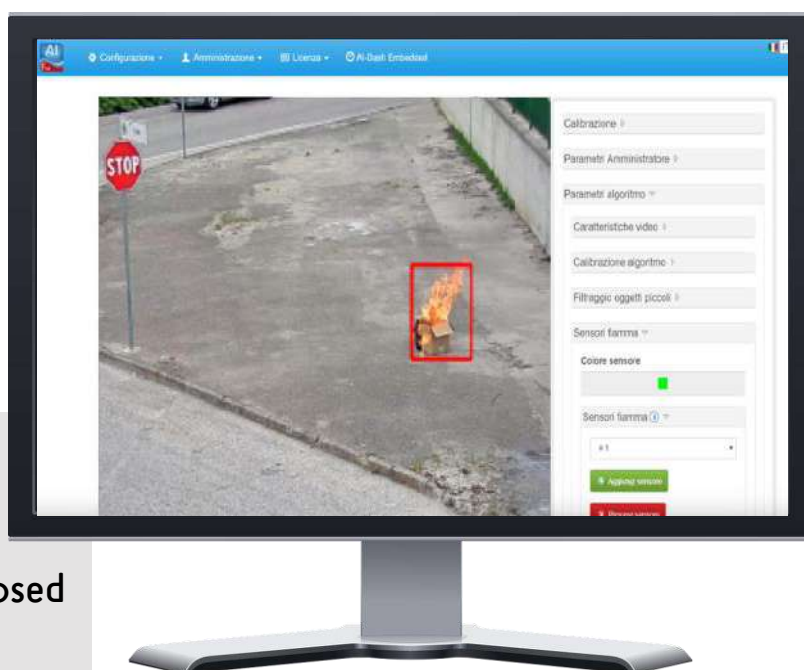
## Fire detection




AI-Fire is the video analytic plugin for the detection of flames in indoors environments, as well as in urban forests and parks.

## AI-SMOKE

## Smoke Detection

AI-Smoke is the video analytic plugin for the detection of smoke in indoors environments, as well as in urban forests and parks.



    
AI-Fire+ is the bundle composed  
by AI-Fire and AI-Smoke

AI-Fire and AI-Smoke can be used to ensure the safety of the environments, through the early detection and localization of flames; the citizen safety, through the detection of the flame outdoors, for instance on vehicles and containers, or indoor, for instance in shops and homes; video surveillance of critical areas such as tunnels, gas stations, airports and train stations, through the identification of accidental fire or arson. Note: both AI-Fire and AI-Smoke require that the color of the flame/smoke is visible [no night mode or thermal camera].

## ACCURATE & RELIABLE



The intelligent video analysis by A.I. Tech is based on a powerful engine which uses advanced algorithms of Intelligence and Artificial Vision, which allow to drastically reduce the number of false alarm, by making the solutions by A.I. Tech robust with respect to the illumination changes and to the presence of shadows and reflections. They allow to well operate both in indoor and outdoor environments.

## OPEN



The video analytic plugins are provided with a public API that allows its full openness towards third part systems for the notification of the events

## SIMPLE TO CONFIGURE



The video analytic plugins are provided with a simple and intuitive configuration system, which allows the setup of the algorithm parameters, the definition of the areas and the lines of interest, the choice of the channels for event notifications and the license management.

## EFFICIENT



The engineering of the algorithms allows to elaborate in parallel a high number of video streams per single core with a full frame rate, so drastically reducing the cost of the hardware.

## INTEGRATION



The video analytic plugins are able to notify the events through different channels, even simultaneously:

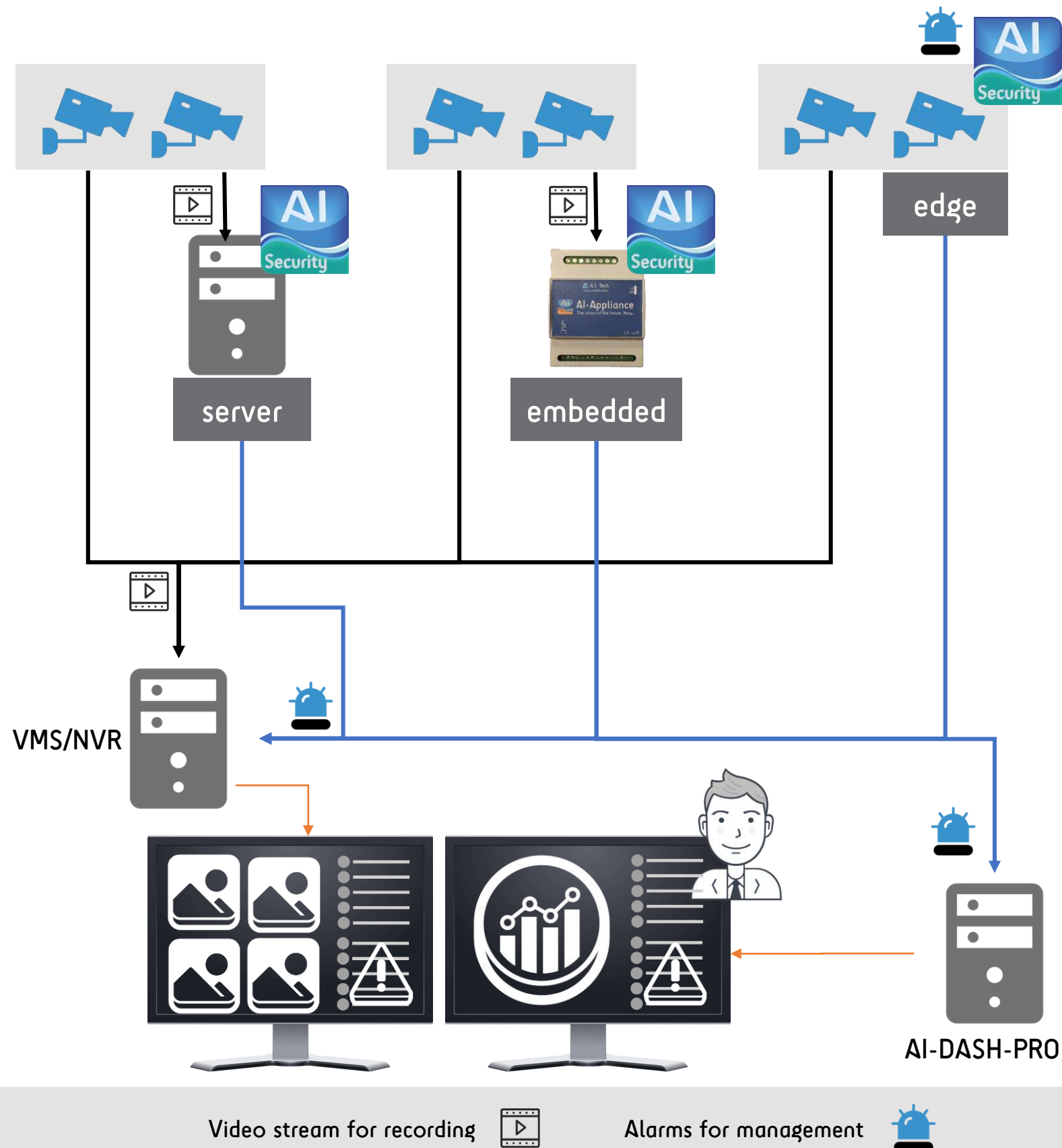
- Third part VMSs [Arteco, Milestone Xprotect, Wisenet Wave, Wisenet SSM, Avigilon]
- NVR Hanwha Techwin
- Text string over TCP-UDP protocols [POS-like]
- E-Mail/FTP
- Digital Output of the camera [with edge side version]
- AI-Dash-embedded / AI-Dash-PRO
- Other third part systems [HTTP+json]
- Customizable CGI



## MULTIPLATFORM

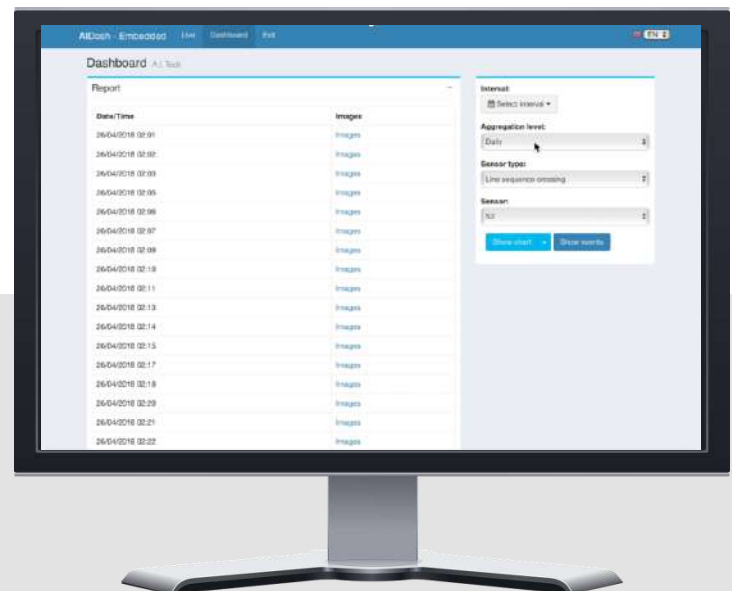
The video analytic plugins are available:

- Server side [Linux based]
- Embedded, as an integrated hw+sw solution [AI-Appliance]
- Edge side [ask the compatible cameras to our support]



## DASH add-on

All the plugins edge-side are also available with a DASH add-on. The plugin indeed, also includes a dashboard integrated directly on board of the camera. Data related to the events, are stored directly on board of the camera (if equipped with the SD card), without the need of any external server. Such data can be visualized in a tabular and graphical form and a set of images associated to the events can be also stored.



You could be also interested in:



**AI-APPLIANCE**



**AI-DASH-PRO**



# A.I. Tech

The Vision of the future. Now.



[www.aitech.vision](http://www.aitech.vision)



[info@aitech.vision](mailto:info@aitech.vision)



[linkedin.com/company/a-i-tech-srl](https://www.linkedin.com/company/a-i-tech-srl)



[@aitech srl](https://www.facebook.com/aitech srl)



[youtube.com/aitech solutions](https://www.youtube.com/aitech solutions)

## AWARDS



**CIO Applications** europa TOP 25  
ARTIFICIAL INTELLIGENCE  
SOLUTION PROVIDERS - 2017

**10** THE MOST *Innovative*  
ARTIFICIAL  
INTELLIGENCE  
SOLUTION PROVIDERS  
2018