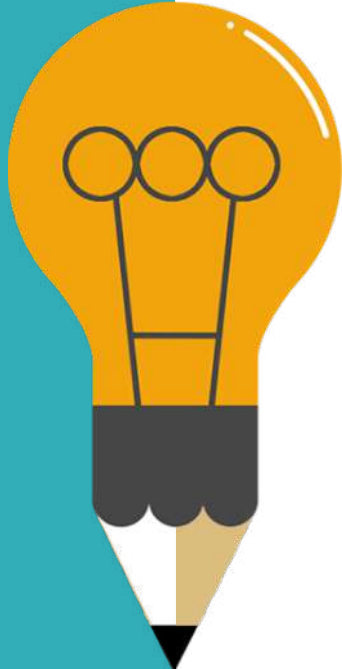




AI-DASH-PRO

VERTICALS

Verticals



01

Smart Security

Manage your alarms in a smart way

02

Smart Parking

Manage both closed and on the road parkings

03

Smart Rooms

Monitor of the rooms for spaces and shifts optimization

04

Car wash

Monitor your car wash activity

05

Smart Cities

Available Soon!



SMART SECURITY

SMART-SECURITY

the vertical for the security powered by A.I. Tech



The vertical allows to manage the events generated by your smart cameras in the smartest possible way and to generate some alarms. The alarms can be generated by a single smart camera or by aggregating data coming from multiple cameras in a temporal sequence.



From VMS to EMS

Only events and images associated to the events will be stored in the dashboard



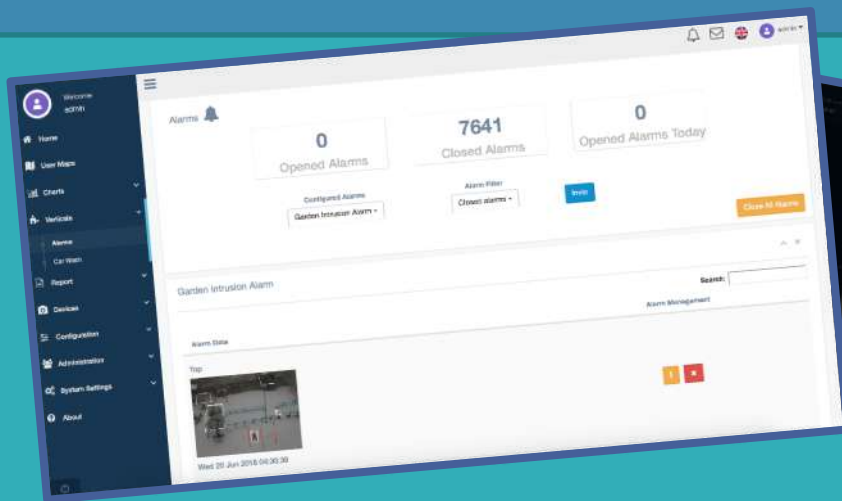
Video
Management
Software



Video
Event
Management
Software



Event
Management
Software



SMART-SECURITY

The vertical for the security powered by A.I. Tech



From smart cameras to events

The dashboard allows to collect, visualize, aggregate, and act on all your video surveillance analytics data generated from your smart cameras



From events to alarms

The dashboard allows to create alarms that can be triggered from the events and that can be easily visualized



Type of Alarms

The alarms can be generated by:

- A single event
- A temporal sequence of events



Events visualization

A single (or a series of) image of the event that has triggered the alarms can be easily visualized



Alarms management

The alarms can be also sent to third party systems (such as Wave)

ALARMS MANAGEMENT



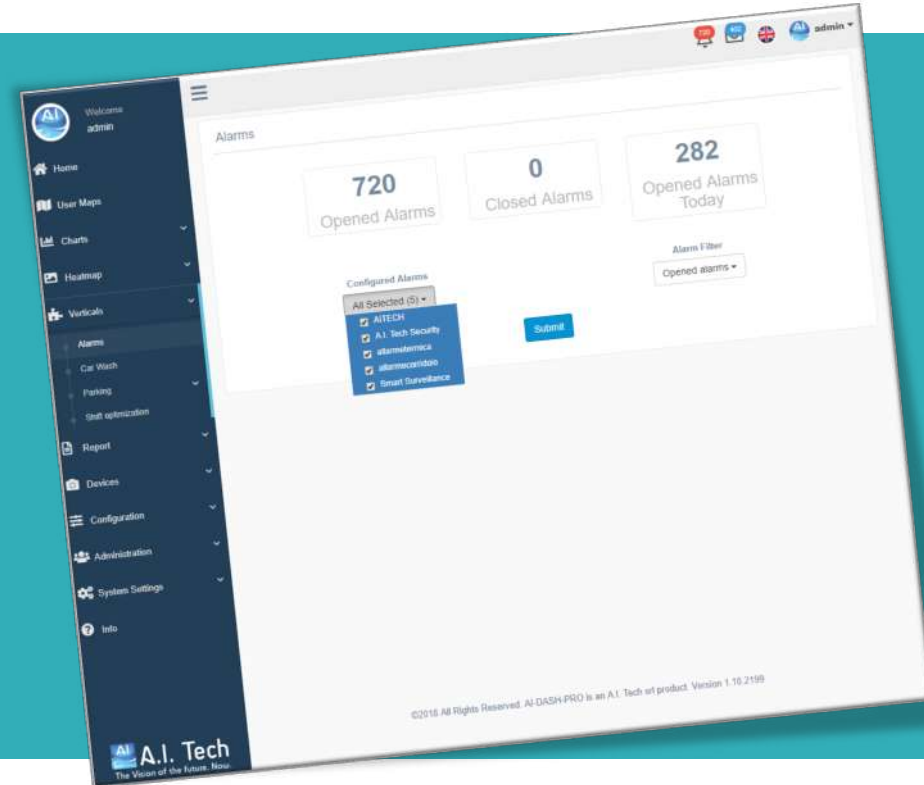
Alarms management

- **Opened Alarms:** all the opened alarm on the Dashboard
- **Closed Alarms:** all the alarms classified as a closed
- **Opened Alarms TODAY:** all the alarms that are being generate in the current day



Visualization of the alarms

- **Configured Alarm:** The alarms logics created
- **Alarm filter:** in terms of opened or closed alarms



ALARMS MANAGEMENT



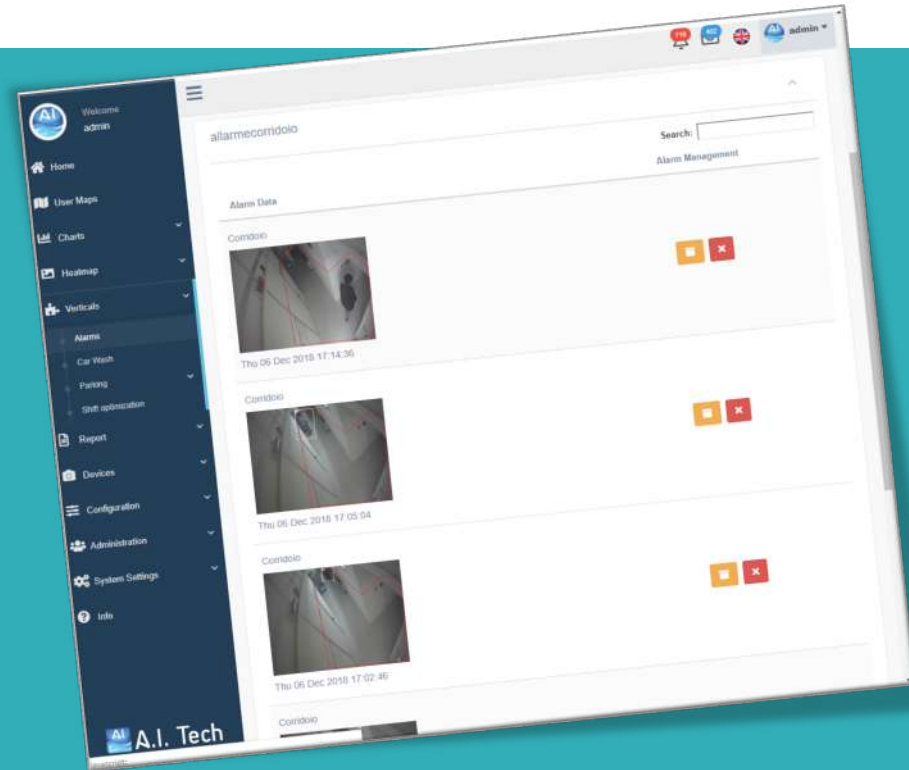
Alarms Data

One or more images (depending on the settings) will be showed, including the date and the time.



Alarms Management

- Close Alarm: to set the alarm as a close (after that the guard manage the alarm).
- Delete Alarm: to delete all the information relate to that specific alarm [e.g. redundant]



SETTINGS

Configuring the alarms



Single event

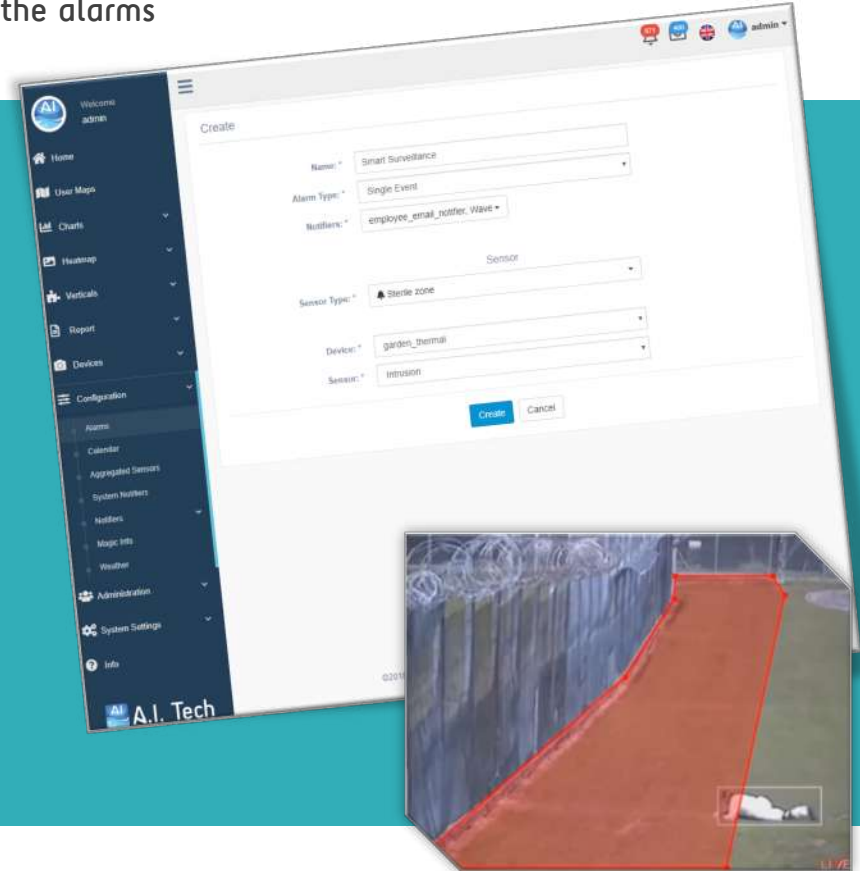
In case an event (for instance an intrusion) occurs, a set of notifiers can be attached.



Notifier

A notifier can be:

- The alarm inside the dashboard, that can be managed and visualized
- HTTP call
- FTP
- Wave
- Email



SETTINGS

Configuring the alarmssc



Temporal sequence of events [AND]

The alarm is generated in case an event occurs and within T secs the second event occurs and so on. There is no limitation on the events that can be simultaneously occurs



Camera 1, Event E1

T secs



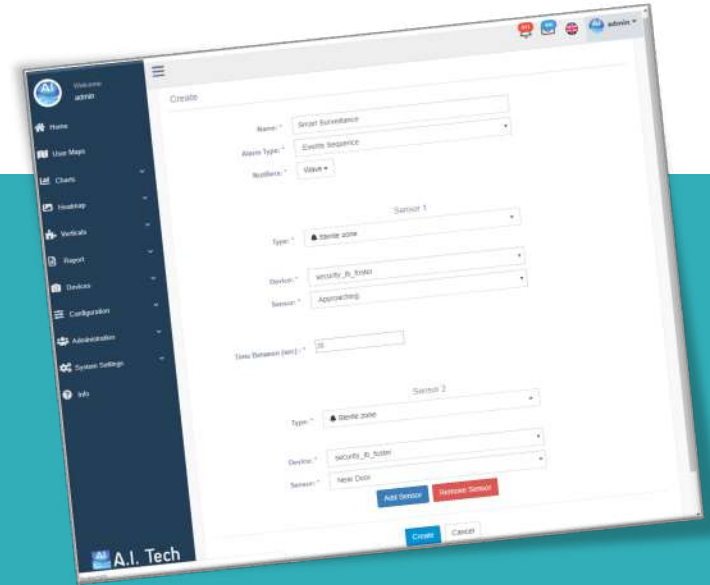
Camera 2, Event E2

T secs



Camera 3, Event E3

Notifiers
(i.e. alarm)



BASIC vs ENTERPRISE

Discover the difference

	BASIC	ENTERPRISE
Multi-tenant architecture, with 3 user levels	✓	✓
Data storing and CSV/image file export for visualization in external system	✓	✓
Aggregation of the events as temporal sequences of events	✓	✓
Forwarding of events to external servers (Email, FTP, CGI HTTP)	✓	✓
Alarms management	✓	✓
Episodic or periodic reports export (via email)	✗	✓
Management of the devices on a map	✗	✓
API to recover data through third part systems	✗	✓



Thank you